

End unit

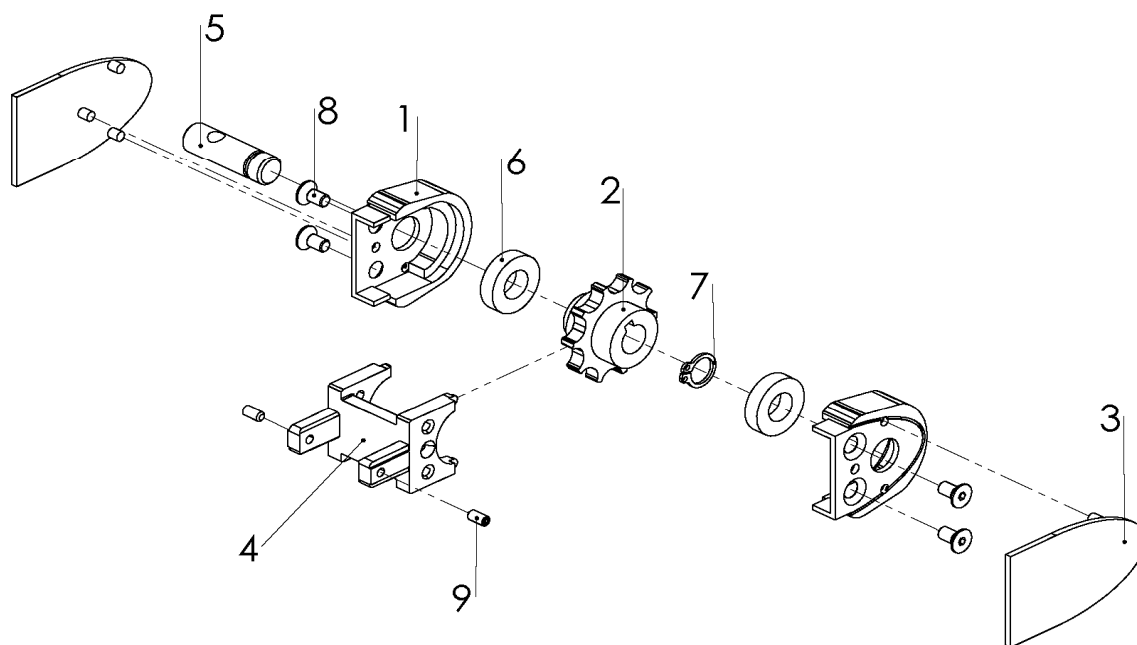
System F45, FS, FL, FM, FK, FH, FB

Content

Conveyor system F45 - end unit
Conveyor system FS - end unit
Conveyor system FL - end unit
Conveyor system FM - end unit
Conveyor system FK - end unit
Conveyor system FH - end unit
Conveyor system FB - end unit
Product index - index

FUEJ 50

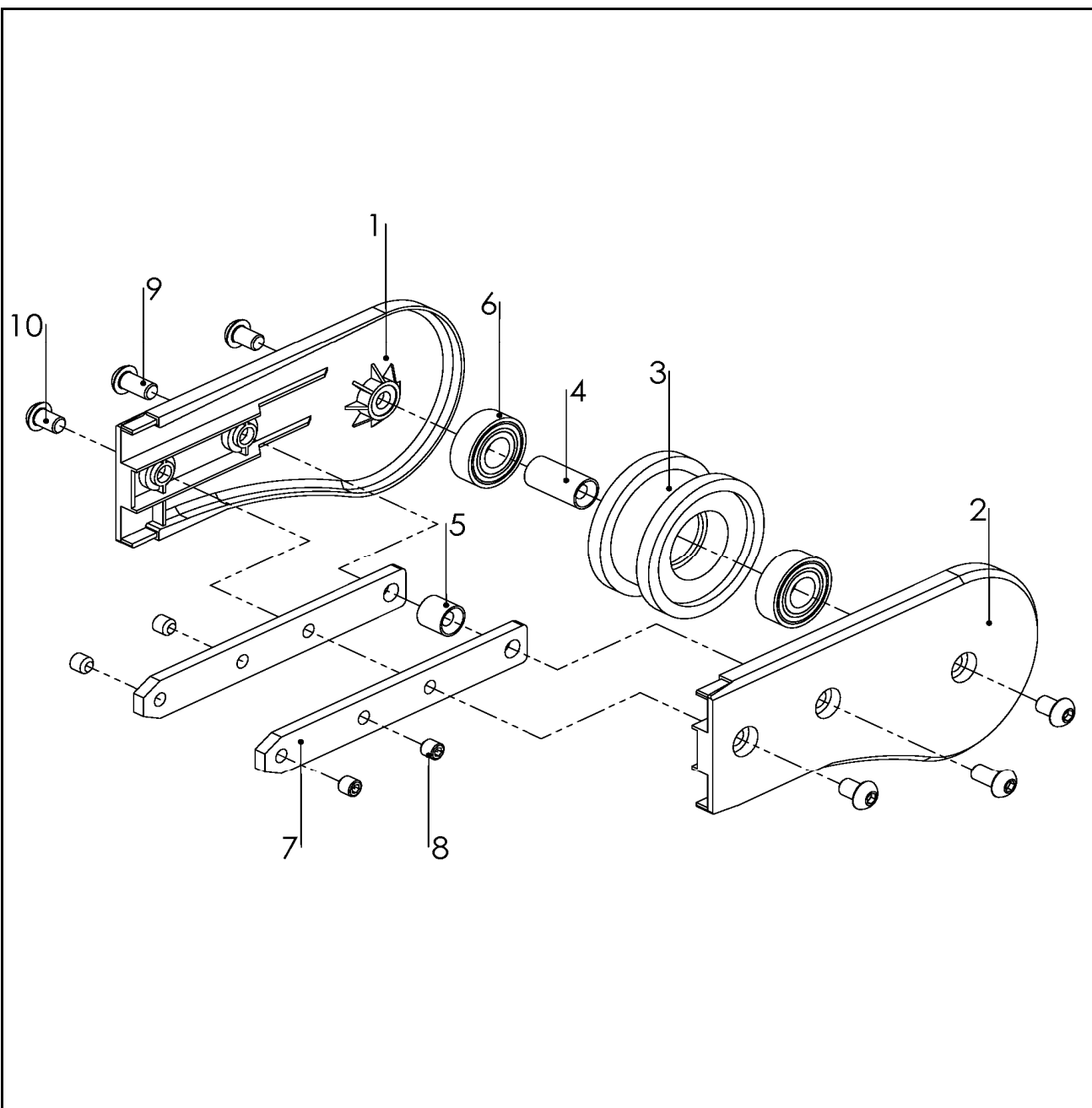
Idler end unit



Item	Part No.	Description	Qty
1	F5112193	Screw	2
2	Wheel For FUEJ50,FUEB 0L(R)U		1
3	F5112536	Cover	2
4	F5112527	Connecting	1
5	Shaftt For FUEB 0L(R)U L=39.5		1
6	Bearing-61901	Bearing	2
7	Retaining ring	Retaining	1
8	Key 4x2-20	Wedge	1
9	M4X8	Screw	2

FSEJ 200

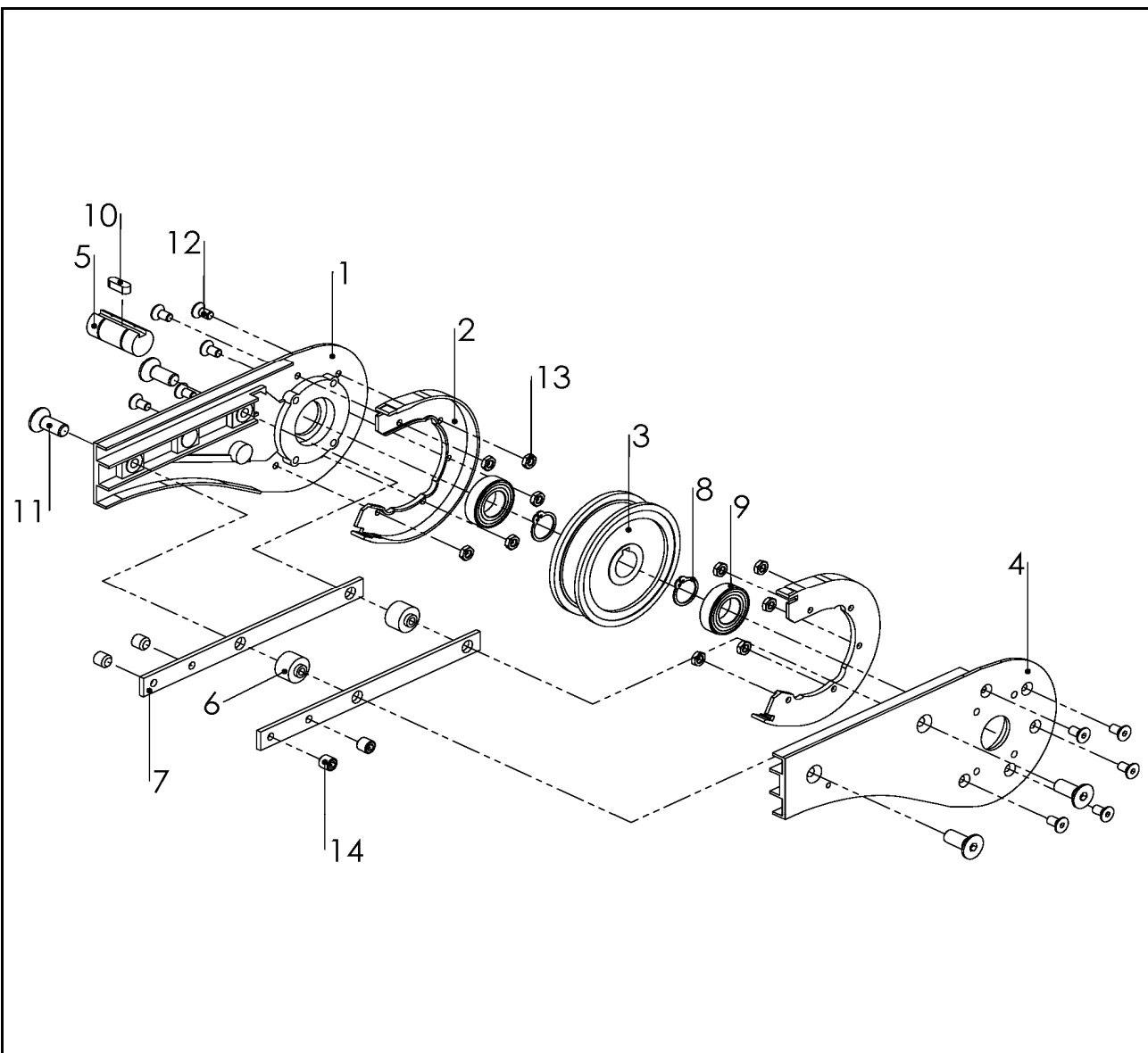
Idler end unit



Item	Part No.	Description	Qty
1	F3902492	Side plate R	1
2	F3902491	Side plate L	1
3	F3902496	Idler wheel	1
4	F3902494	Shaft	1
5	F3902493	Spacer	1
6	Bearing 6202	Bearing	2
7	F3902495	Connecting strip	2
8	M8 x 8	Spacer	4
9	M8X16	Screw	2
10	M8X12	Screw	4

FSEJ 320

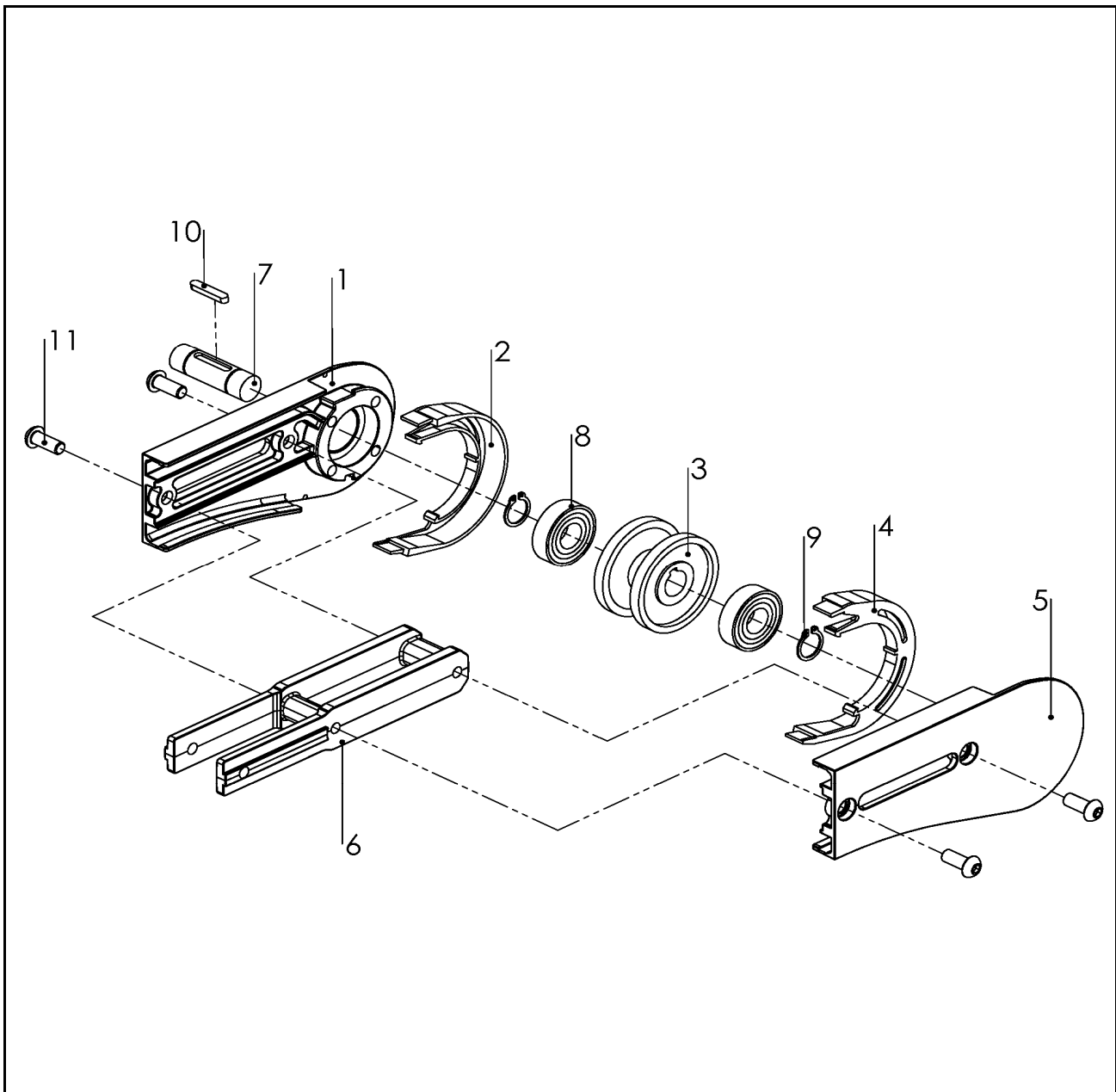
Idler end unit



Item	Part No.	Description	Qty
1	Side plate L For FSEJ 320		1
2	Steering Guide L For FSEJ 320		1
3	Drive wheel For FSEJ320		1
4	Side plate R For FSEJ 320		1
5	Shaft For FSEJ 320		1
6	F3921917A	Spacer	2
7	F3921738A	Connecting strip	2
8	C rings	Retaining ring	2
9	Bearing6005	Bearing	2
10	Key 8x7-23	Wedge	1
11	M8X20	Screw	4
12	M5X10	Screw	10
13	M8 Nut	Nut	10
14	M8X8	Screw	4

FLEJ 200S

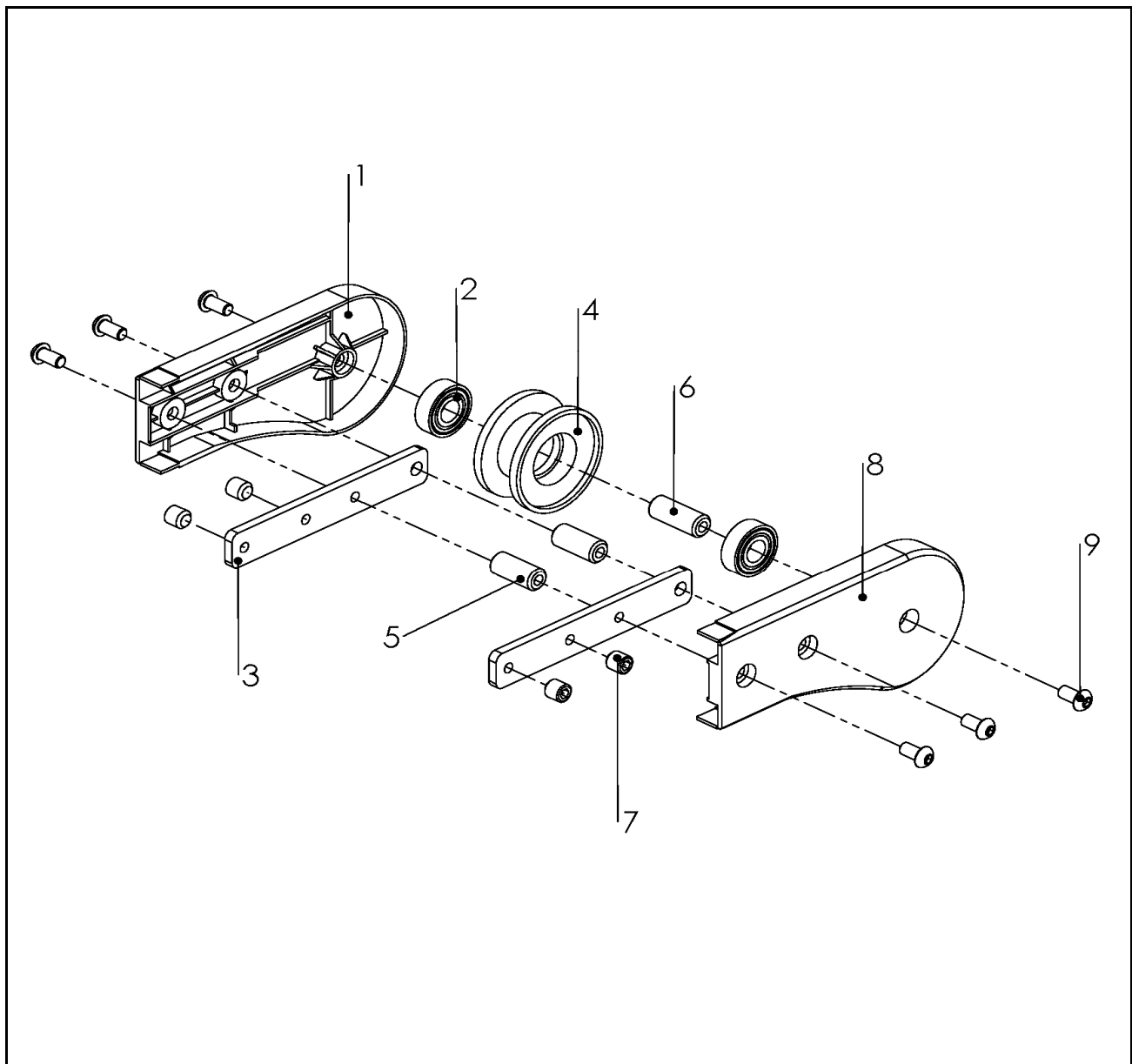
Idler end unit



Item	Part No.	Description	Qty
1	F5057117	Side plate R	1
2	F5057120	Steering guide R	1
3	F5057119	Idler wheel	1
4	F5057121	Steering guide L	1
5	F5057118	Side plate L	1
6	F5057607	Connecting strip	1
7	F5057124	Shaft	1
8	F5058256	Bearing	2
9	F5057594	Retaining ring	2
10	F5057596	Wedge	1
11	M8X20	Screw	4

FLEJ 200

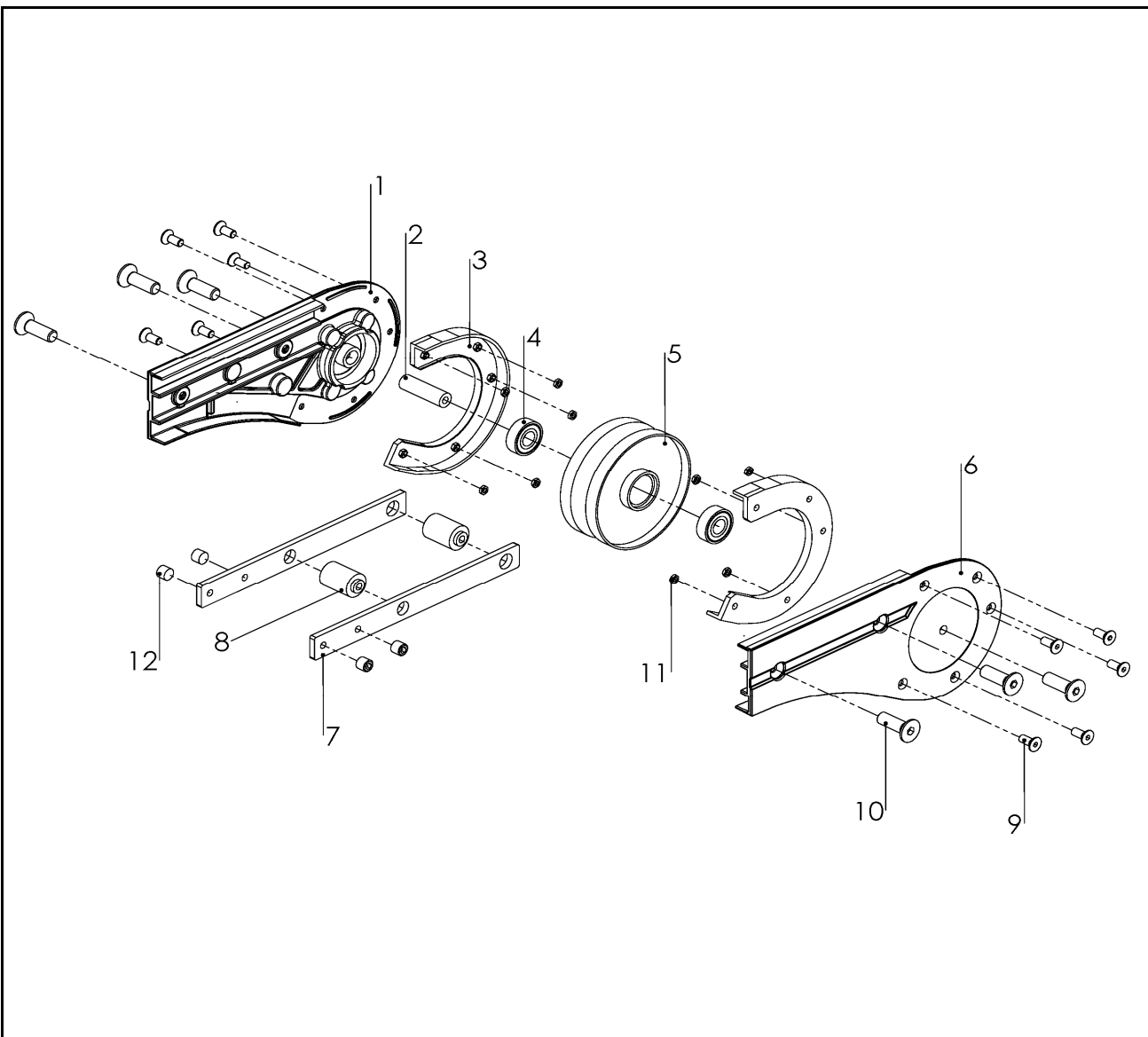
Idler end unit



Item	Part No.	Description	Qty
1	F3904031	Side plate-R	1
2	Bearing 6202	Beating	2
3	F3902186	Connecting strip	2
4	F3902150	Idler wheel	1
5	F3902185	Distance(spacer)	2
6	F3902201	Shaft	1
7	M8X8	Grub screw	4
8	F3904032	Side plate-L	1
9	M8X20	Screw	6

FLEJ 320

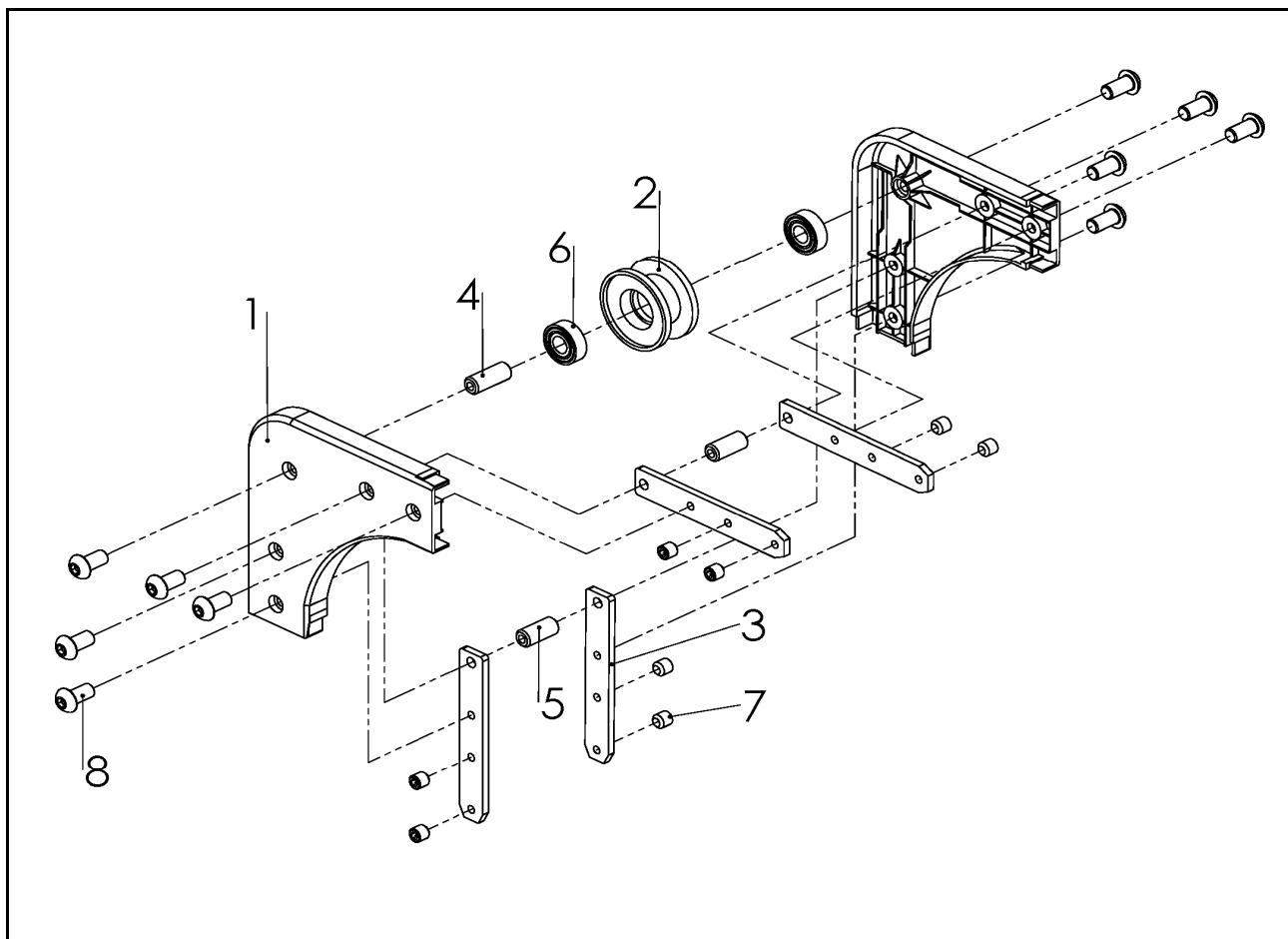
Idler end unit



Item	Part No.	Description	Qty
1	F3921159A	Side plate R	1
2	F3921217A	Shaft	1
3	F3924518A	Steering guide	2
4	Bearing 6202	Bearing	2
5	F3921160A	Idler wheel	1
6	F3921158A	Side plate L	1
7	F3921123A	Connecting strip	2
8	F3920947A	Spacer	2
9	M5 x 10	Screw	10
10	M8 x 20	Screw	6
11	NUT M5	Screw	10
12	M8 x 8	Screw	4

FLEK 90R40

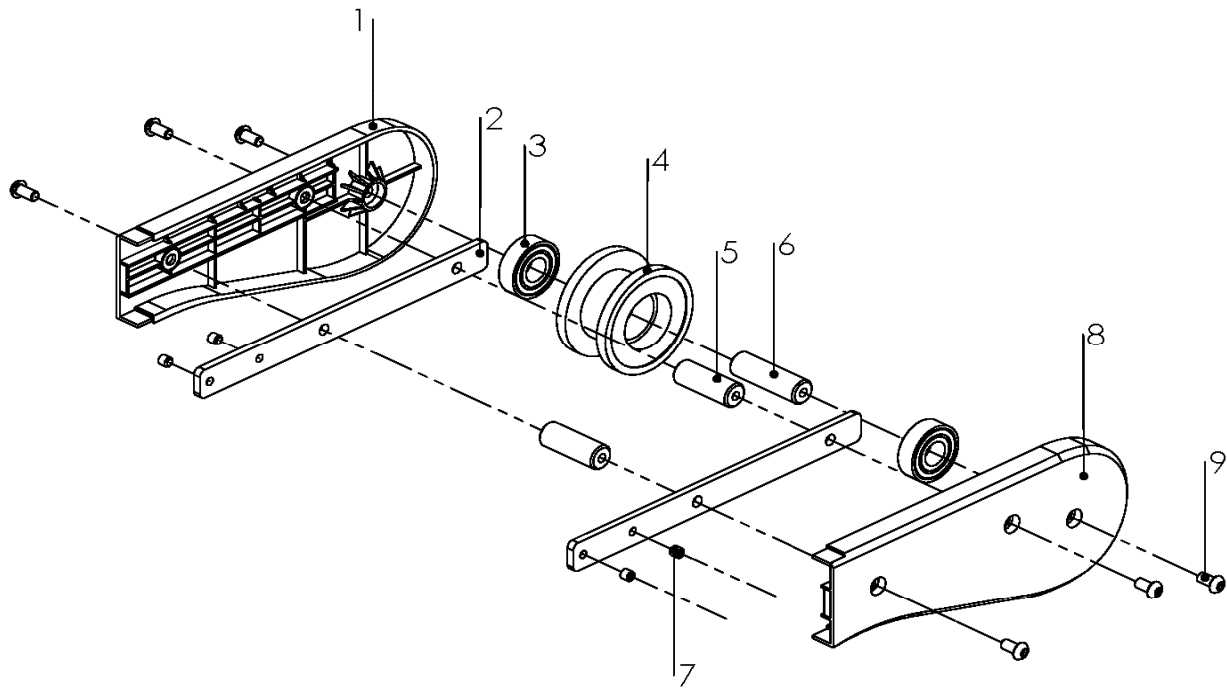
Idler bend unit



Item	Part No.	Description	Qty
1	F3902291	Side plate.pair L&R	1
2	F3902150	Idler wheel	1
3	F3902186	Connecting strip	4
4	F3902201	Shaft	1
5	F3902185	Disance spacer	2
6	Bearing 6202-2Z	Bearing	2
7	M8X8	Screw	8
8	M8X20	Screw	10

FMEJ 300

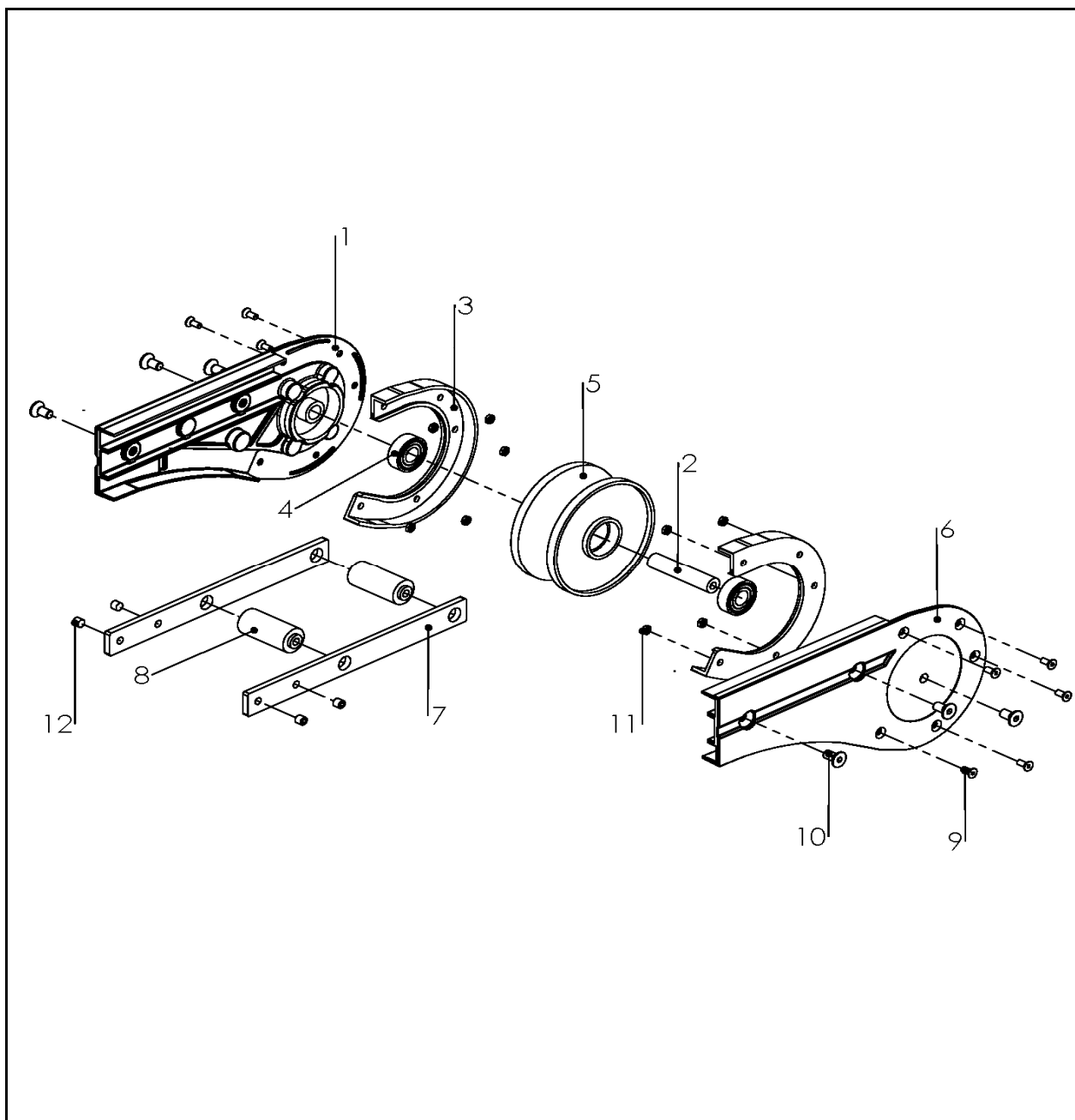
Idler end unit



Item	Part No.	Description	Qty
1	F3902806-R	Side plate-R	1
2	F3902607	Connecting strip	2
3	Bearing 6204	Bearing	2
4	F3902810	Idler wheel	1
5	F3902826	Distance(spacer)	2
6	F3902824	shaft	1
7	M8X8	Grub screw	1
8	F3902806-L	Side plate-L	6
9	M8X20	screw	4

FMEJ 315

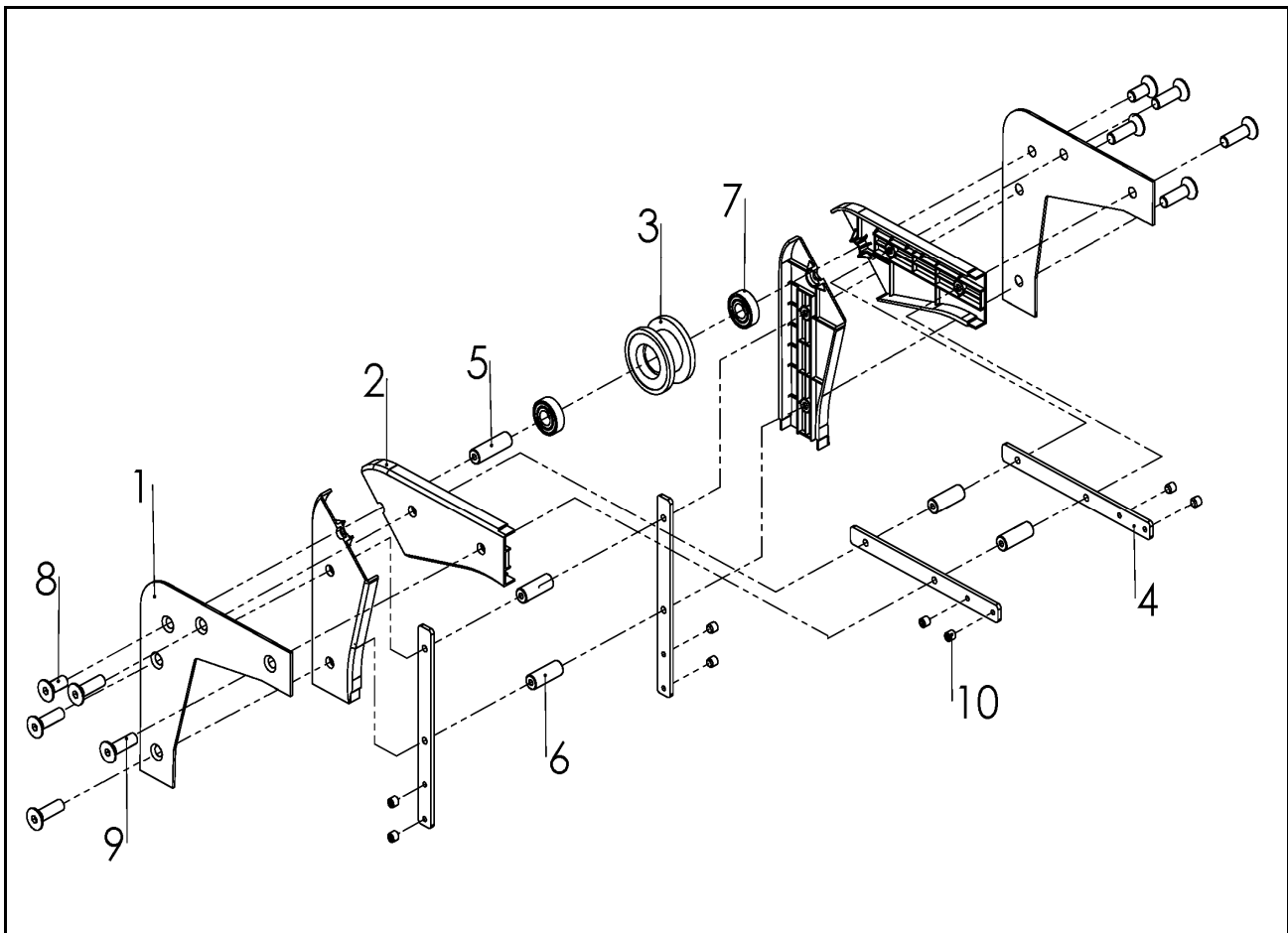
Idler end unit



Item	Part No.	Description	Qty
1	F3924516A	Side plate R	1
2	F3921074A	Drive shaft	2
3	F3924519A	Steering guide	2
4	Bearing6202	Bearing	2
5	F3924517A	Idler wheel	1
6	F3924515A	Side plate L	1
7	F3921123A	Connecting strip	1
8	F3904440A	Spacer	2
9	M5 x 10	Screw	10
10	M8 x 20	Screw	6
11	NUT M5	Screw	10
12	M8 x 8	Screw	4

FMEK 90R50

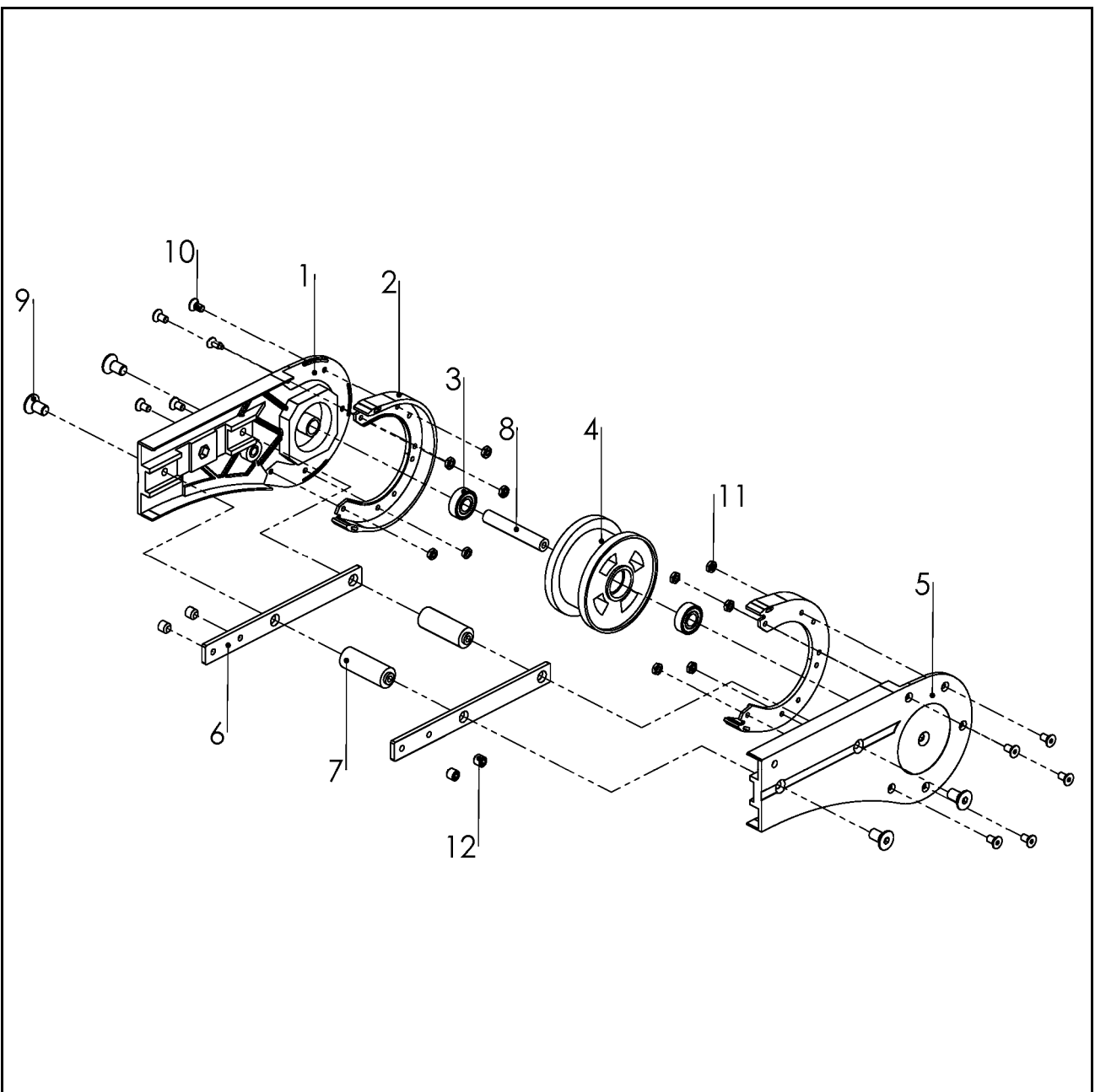
Idler bend unit



Item	Part No.	Description	Qty
1	F3902911	Side plate,pair L&R	1
2	F3902910	Side plate,pair L&R	2
3	F3902810	Idler unit	1
4	F3902607	Connecting strip	4
5	F3902824	Shaft	1
6	F3902826	Distance spacer	4
7	Bearing 6204-2Z	Bearing	2
8	M8X8	Screw	2
9	M8X25	Screw	8
10	M8X35	Screw	8

FKEJ 350

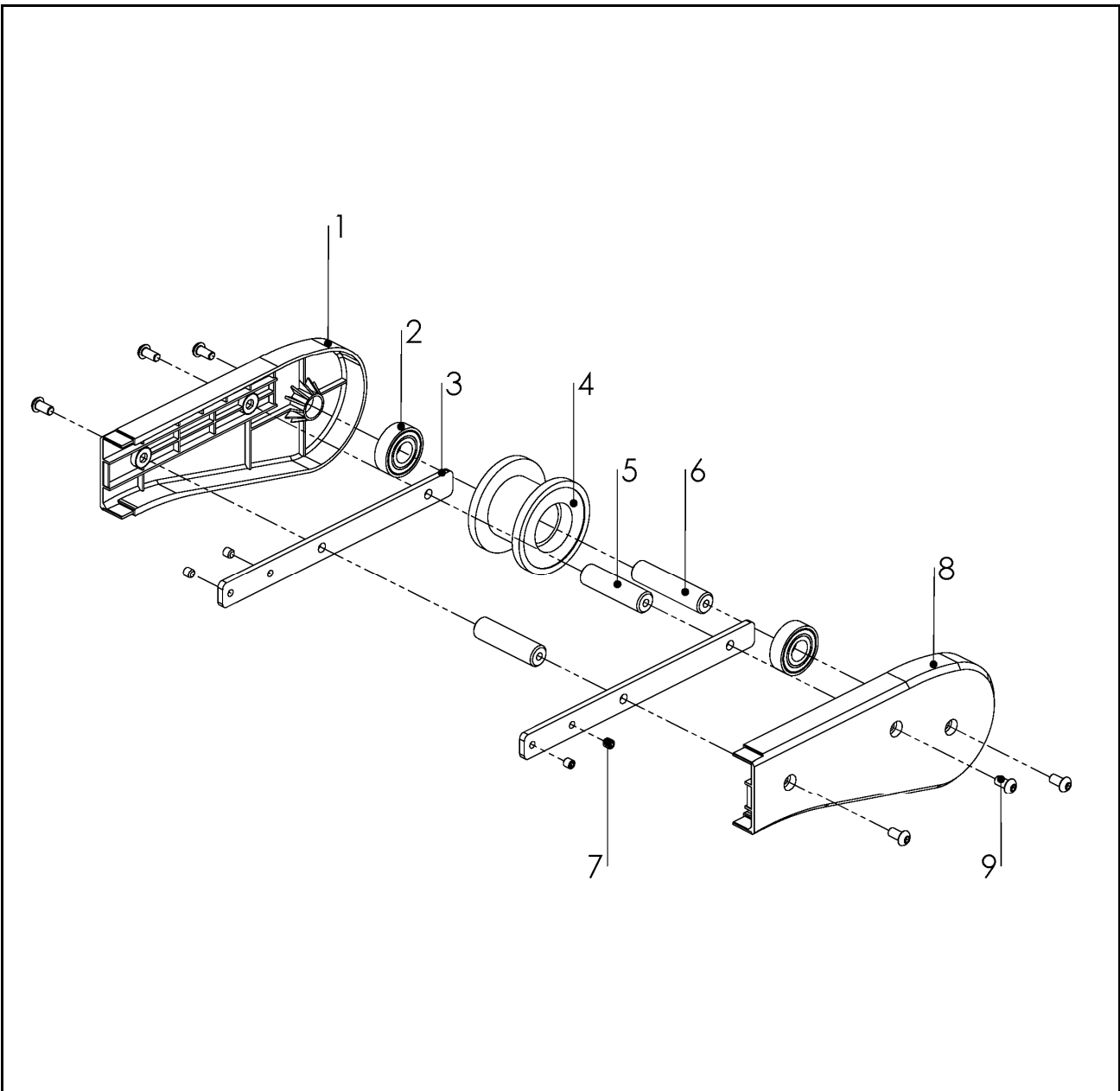
Idler end unit



Item	Part No.	Description	Qty
1	F3920208	Side plate R	1
2	F3924758	Steering guide	2
3	Bearing 6202	Bearing	2
4	F3924757	Idler wheel	1
5	F3920207	Side plate L	1
6	F3921123A	Connecting strip	2
7	F3924989	Spacer	2
8	F3925001	Shaft	1
9	M8 x 16	Screw	4
10	M5X10	Screw	10
11	M5 NUT	Screw	10
12	M8 x 8	Screw	4

FHEJ 315

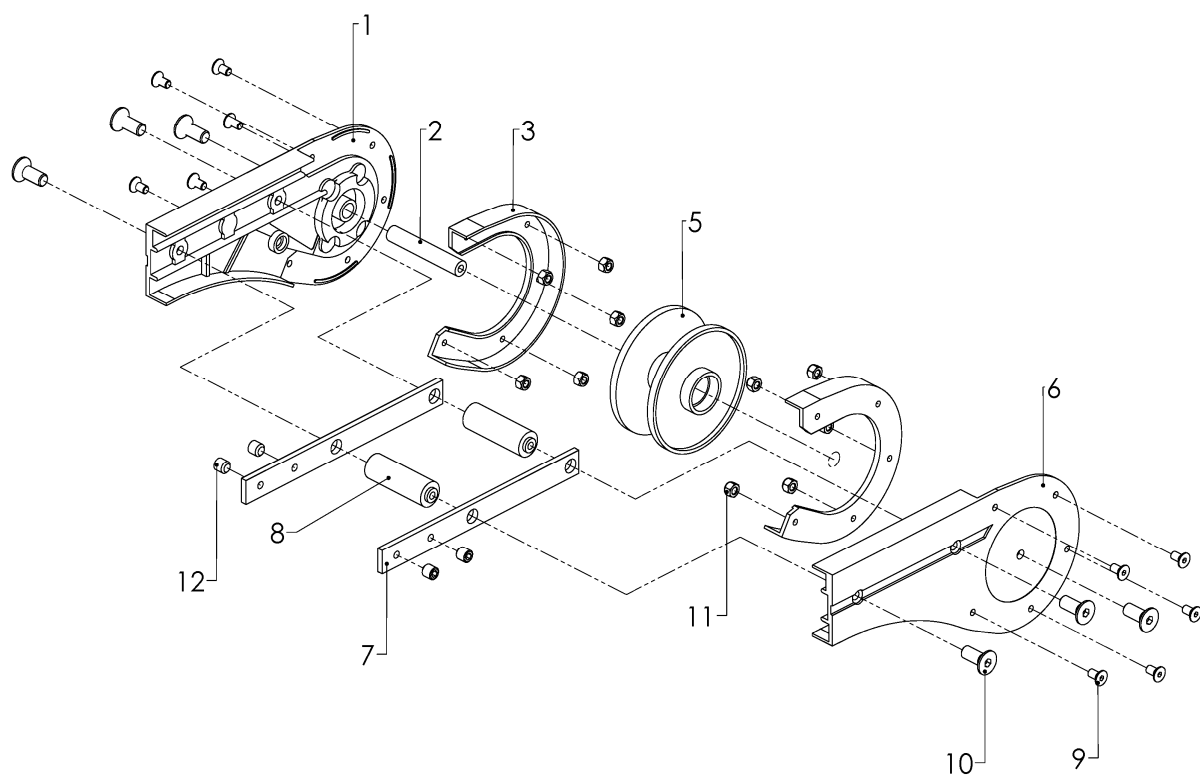
Idler end unit



Item	Part No.	Description	Qty
1	F3902743-R	Side plate-R	1
2	Bearing 6204	Bearing	2
3	F3902607	Connecting strip	2
4	F3902553	Idler wheel	1
5	F3902604	Distance(spacer)	2
6	F3902923	Shaft	1
7	M8X8	Grub screw	4
8	F3902743-L	Side plate-L	1
9	M8X20	Screw	6

FHEJ 325

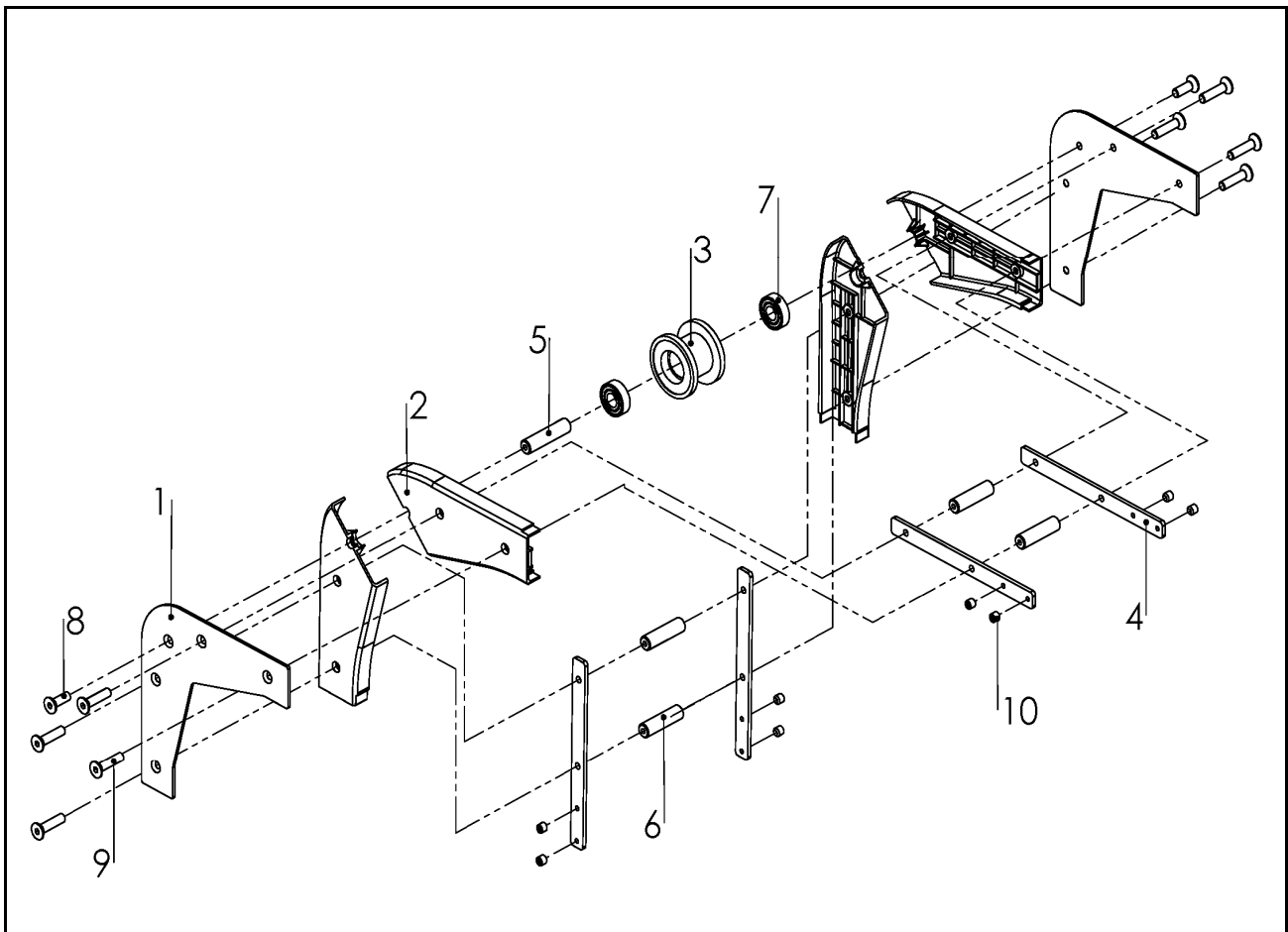
Idler end unit



Item	Part No.	Description	Qty
1	F3921162A	Side plate R	1
2	F3921287A	Shaft	1
3	F3921164A	Steering guide	2
4	Bearing 6202	Bearing	2
5	F3921163A	Idler wheel	1
6	F3921161A	Side plate L	1
7	F3921123A	Connecting strip	2
8	F3904140A	Spacer	2
9	M5 x 10	Screw	10
10	M8 x 20	Screw	6
11	NUT M5	Screw	10
12	M8 x 8	Screw	4

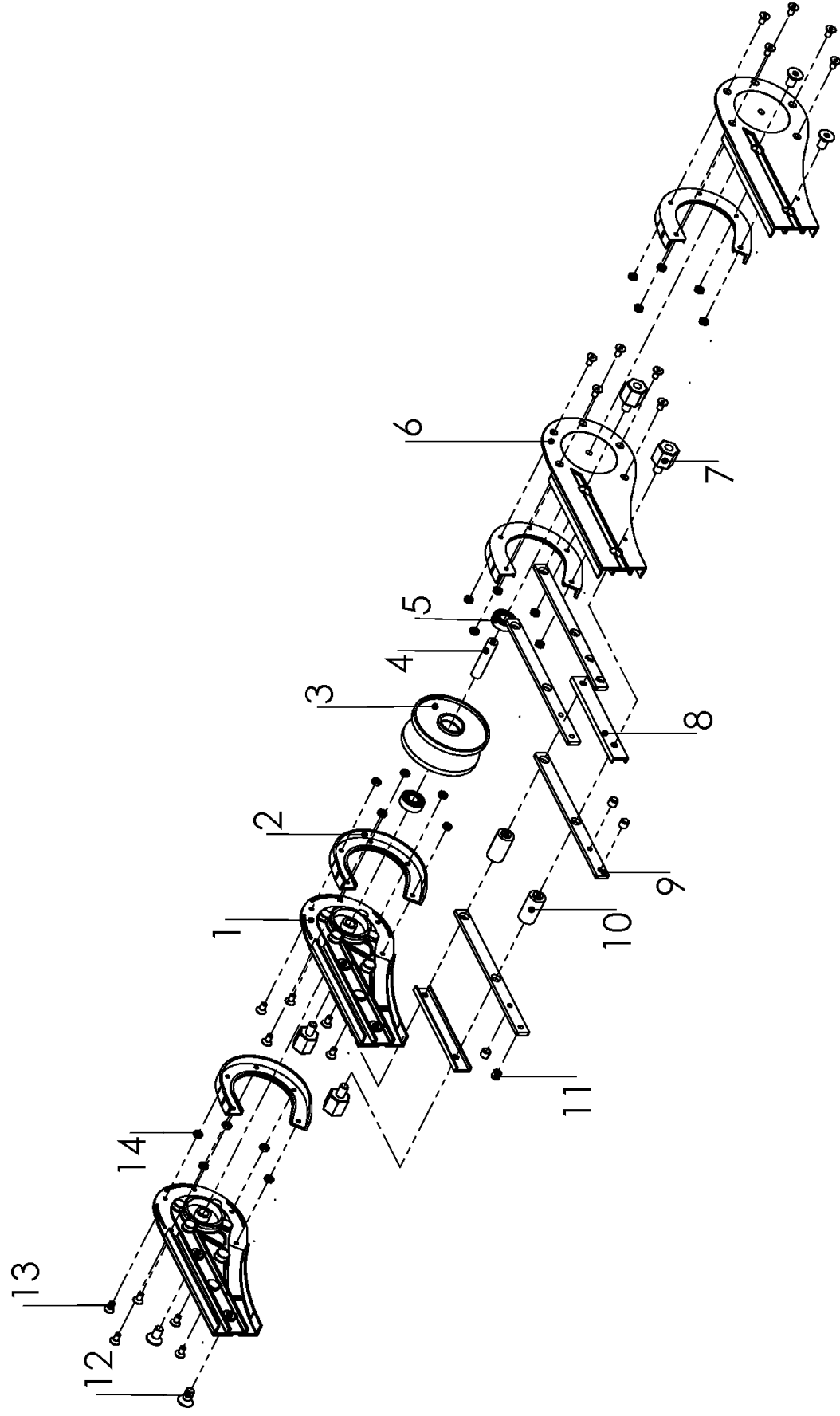
FHEK 90R50

Idler bend unit



Item	Part No.	Description	Qty
1	F3902571	Side plate.pair L&R	1
2	F3902793	Side plate.pair L&R	2
3	F3902553	Idler wheel	1
4	F3902607	Connecting strip	4
5	F3902923	Shaft	1
6	F3902604	Disance spacer	4
7	Bearing 6204-2Z	Bearing	2
8	M8X25	Screw	2
9	M8X35	Screw	8
10	M8X8	Screw	8

FBEJ 140 Idler end unit

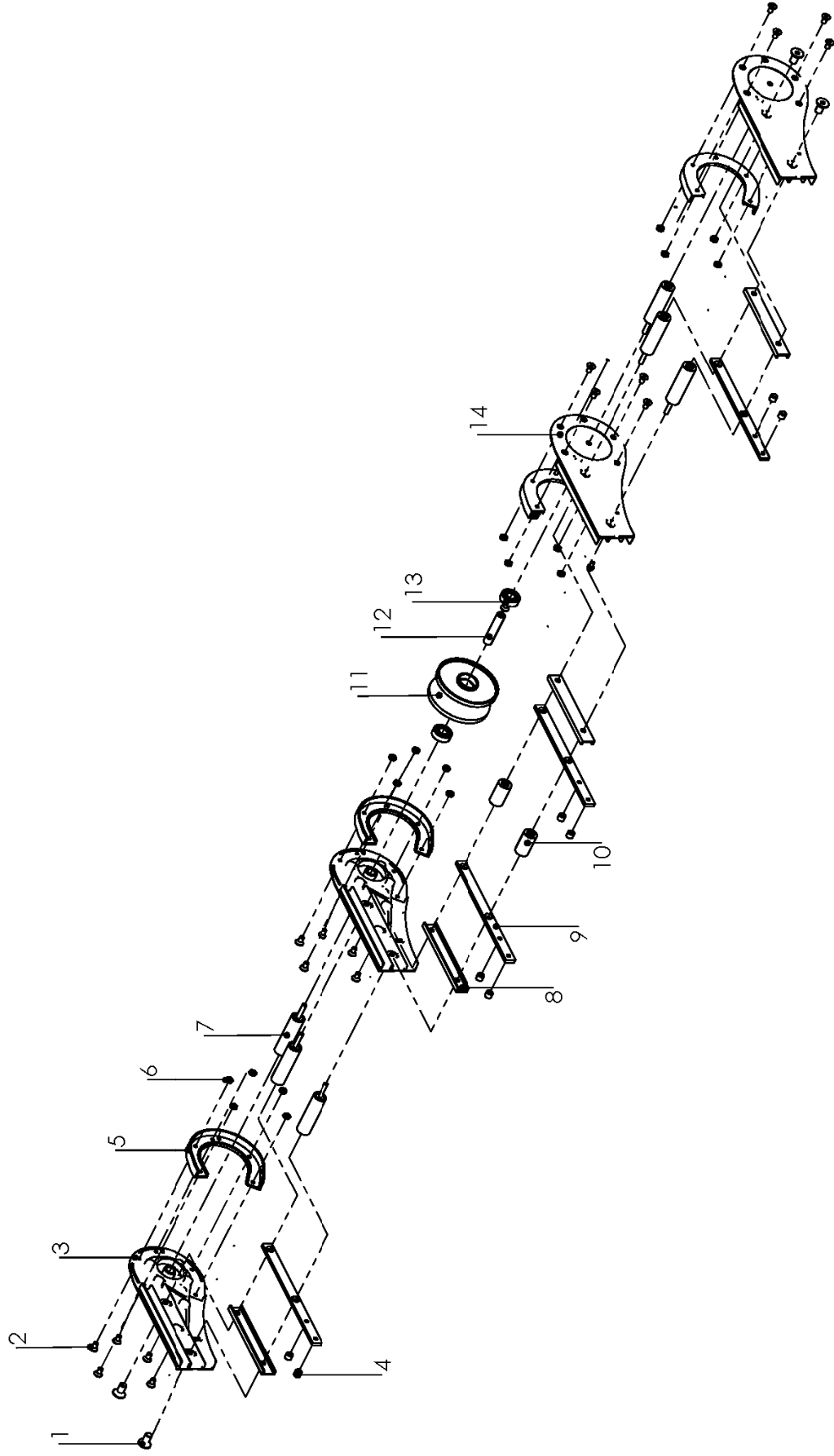


FBEJ 140

Idler end unit

Item	Part No.	Description	Qty
1	F3924516A	Side plate R	2
2	F3924519A	Steering Guide	4
3	F3924517A	Idler wheel	1
4	F3921074A	Shaft	1
5	Bearing6202	Bearing	2
6	F3924515A	Side plate L	1
7	For FBEJ 140 Idler		4
8	F5044130	Spacer	2
9	F5044317	Connecting strip	2
10	F3904440A	Spacer	2
11	M8X8	Screw	4
12	M8X16	Screw	8
13	M5X12	Screw	20
14	M5 Nut	Nut	20

FBEJ 175 Idler end unit

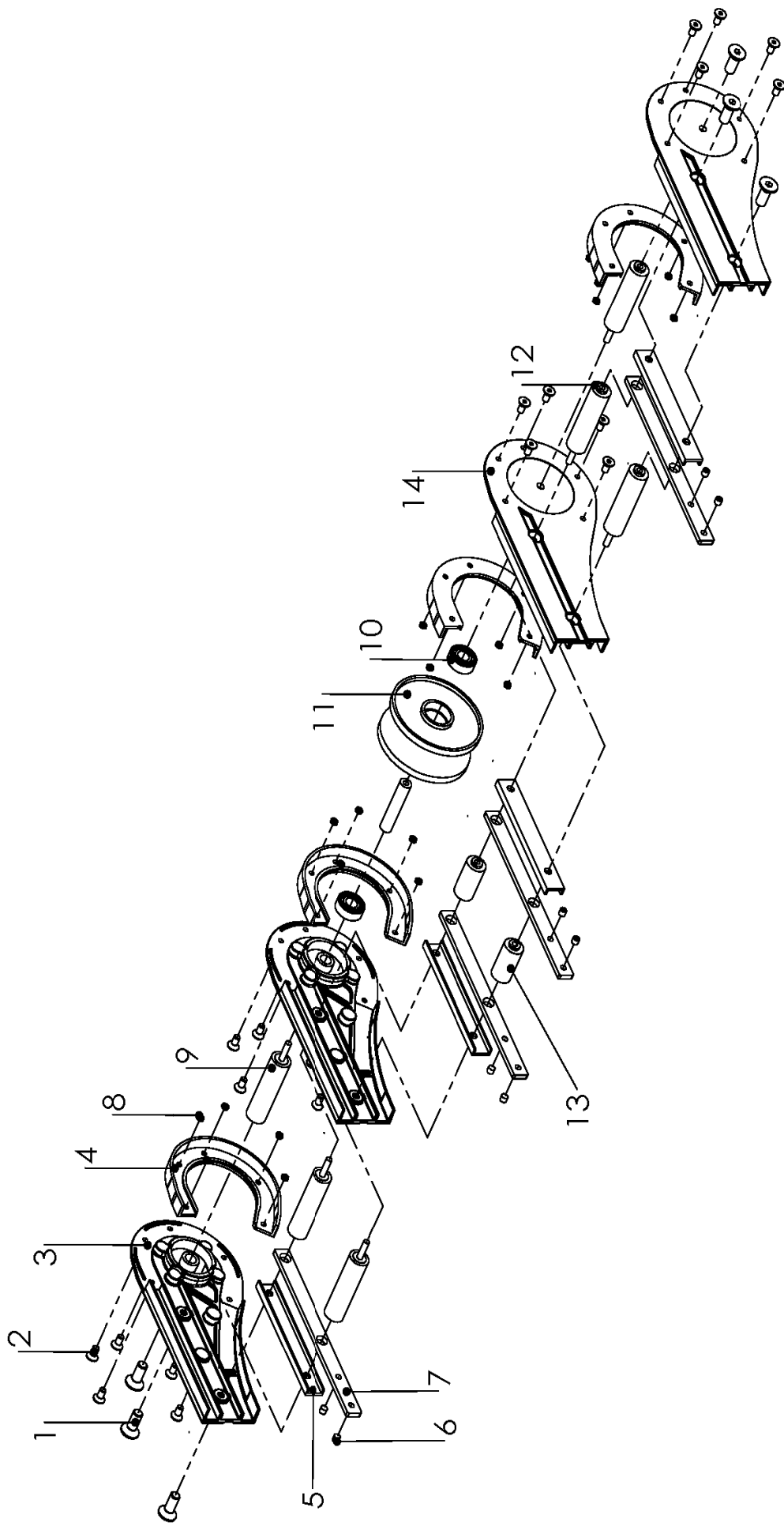


FBEJ 175

Idler end unit

Item	Part No.	Description	Qty
1	M8X20	Screw	4
2	M5X10	Screw	20
3	F3924516A	Side plate-R	2
4	M8X8	Screw	8
5	F5043876A	Guide	4
6	M5 Nut	Nut	20
7	F5044331	Spacer, out	6
8	F5044130	Spacer	4
9	F5044317	Connecting strip	4
10	F3904440A	Spacer	2
11	F3924517A	Idler wheel	1
12	F3921074A	Shaft	1
13	Bearing6202	6202-2z	2
14	F3924515A	Side plate-L	2

FBEJ 295 Idler end unit



FBEJ 295

Idler end unit

Item	Part No.	Description	Qty
1	M8X20	Screw	4
2	M8 x 10	Screw	20
3	F3924516A	Side plate-R	2
4	F5043876A	Guide	4
5	F5044130	Spacer	4
6	M8 x8	Screw	8
7	F5044317	Connecting strip	4
8	M5 Nut	Nut	20
9	F5053445	Spacer outer	6
10	Bearing6202	6202	2
11	F3924517A	Idler wheel	1
12	F3921074A	Shaft	1
13	F3904440A	Spacer	2
14	F3924515A	Side plate-L	2

